

Wall Down Lite

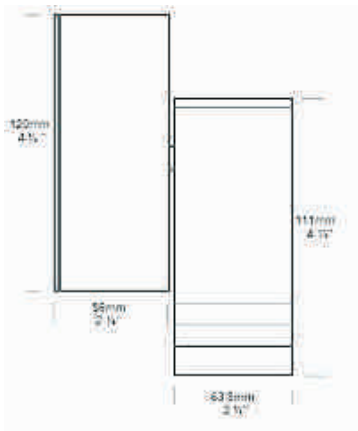
Metal Halide

Cat. No. DL/MH



Metal Halide lamps are highly energy efficient light sources using less energy and out putting 2 - 3 times the light of a halogen lamp. Suitable for mounting on timber, masonry, stone, etc. Non adjustable for one way wall washing, can be mounted with the lamp directed up or down. Water resistant with a 125mm diameter mounting base, complete with stainless steel screws.

Ordering Information



Luminaire Type

DL/MH - Wall Down Lite

Material/Finish

BK - Black
BZ - Bronze
GN - Green
MS - Metallic Silver
WH - White

COP - Copper
SS - 316 Stainless Steel

Accessories

CJK150 - Cable Joint Kit
DFL - Frosted Lens
GG - Glare Guard

Ordering Example DL/MH BK - Wall Spot in Black
DFL - Frosted Lens

(Accessories ordered separately)



Design Patent Pending



FACTORY: Ph: 64-9-528 9471 Fax: 64-9-528 9361.

USA: Ph. 310 560 7310 Fax. 1 877 692 4589.

hunza@hunza.co.nz www.hunza.co.nz

Specifications may change without notice.

130 Felton Mathew Ave, Glen Innes, Auckland, New Zealand.

3237 Long Island St, W. Sacramento, California 95691, USA.

Manufactured in New Zealand.

© 2008 Hunza Holdings Ltd

Ver 1.4

Luminaire Construction

CNC machined from the following metals:
Body: High corrosion resistant low copper 63.5mm (2½") x 10mm (25/64") aluminium.
 End cap - solid aluminium 63.5mm (2½") rod,.

Base & Mounting Plate: Cast from virgin high corrosion resistant CC401 low copper aluminium alloy chromate substrate and high UV resistant polyester powder coat - Black, Bronze, Green, Metallic Silver, White.

Body: Copper 63.5mm (2½") x 10mm (25/64). End cap - solid copper 63.5mm (2½") rod.

Base: Copper Hand spun 2mm (5/64")
Mounting Plate: Forged copper.

Body: Stainless steel 316 63.5mm (2½") x 10mm (25/64) rod. End cap - 316 stainless steel 63.5mm (2½") rod.

Base: Investment cast and CNC machined.
Mounting Plate: Investment cast and CNC machined .

Mounting

A mounting plate is fixed to the wall using two screws and the luminaire is fitted to the mounting plate.

Features

Lens:

10mm (3/8") Thick flush clear tempered shatter resistant glass.

Life Time Warranty.

Gasket: Silicone, iron impregnated 220°C (428°F).

Lamp Holder: GX10 - 350°C (662°F) ceramic multi contact lamp holder with 250°C (480°F) teflon cables.

Accessories:

CJK150 cable Joint Kit (Cat CJK150)

Frosted Lens (Cat. DFL).

Glare Guard (Cat. GG.)

Swivels: Aluminium and Copper luminaires - 360° rotation and 0 - 90° elevation, solid brass with anti rust spring.

Stainless Steel luminaires - 360° rotation and 0 - 90° elevation, full stainless steel construction.

Standards

IP66 AS/NZS60598.2.2



UL1598

Luminaire Weight

Alum .900kg (1lb 15oz)
 Cop 1.710kg (3lb 12oz)
 SS 1.500kg (3lb 4oz)

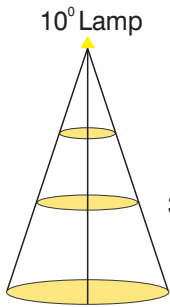
Power Supply

Ballast built in: 230 - 240 volt ac 50Hz.

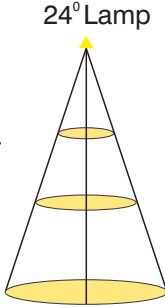
USA/ Canada

Ballast built in: 120 volt ac 60Hz.

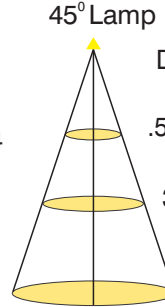
Luminaire: supplied with
 MR16 GX10 20 watt M156 lamp



Distance	Circle	Lux
.5 Mtr. (19")	.094 (4")	47744
3 Mtr. (9'9")	.563 (1'10")	1326
5 Mtr. (16'4")	.939 (3'1")	477

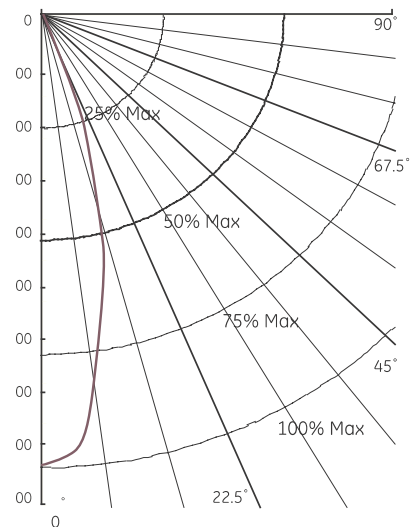
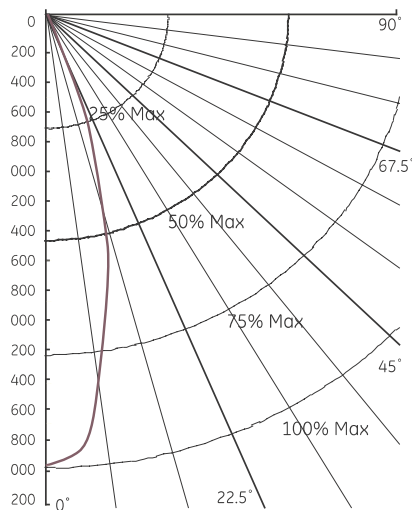
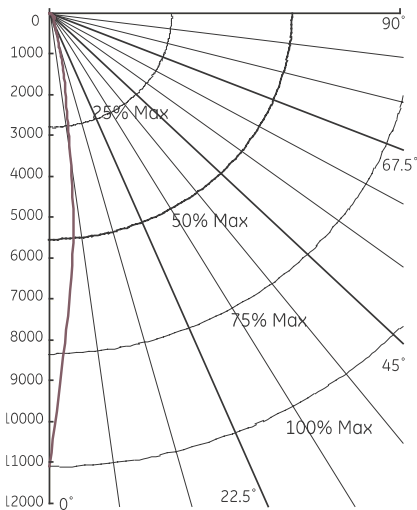


Distance	Circle	Lux
.5 Mtr. (19")	.094 (4")	13064
3 Mtr. (9'9")	.563 (1'10")	363
5 Mtr. (16'4")	.939 (3'1")	131



Distance	Circle	Lux
.5 Mtr. (19")	.094 (4")	6740
3 Mtr. (9'9")	.563 (1'10")	187
5 Mtr. (16'4")	.939 (3'1")	67

Distribution of Luminous Intensity. Diagrams show polar light intensity curves and beam angles for vertical base up orientation



FACTORY: Ph: 64-9-528 9471 Fax: 64-9-528 9361.
USA: Ph: 310 560 7310 Fax: 1 877 692 4589.
 hunza@hunza.co.nz www.hunza.co.nz
 Specifications may change without notice.

130 Felton Mathew Ave, Glen Innes, Auckland, New Zealand.
 3237 Long Island St, W. Sacramento, California 95691, USA.
 Manufactured in New Zealand.
 © 2008 Hunza Holdings Ltd