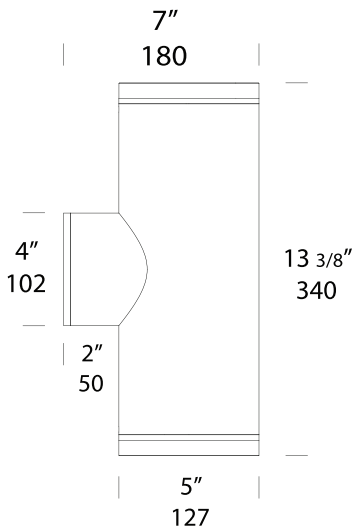


Pillar Lite ULTRA

Cat. No. PIL/U



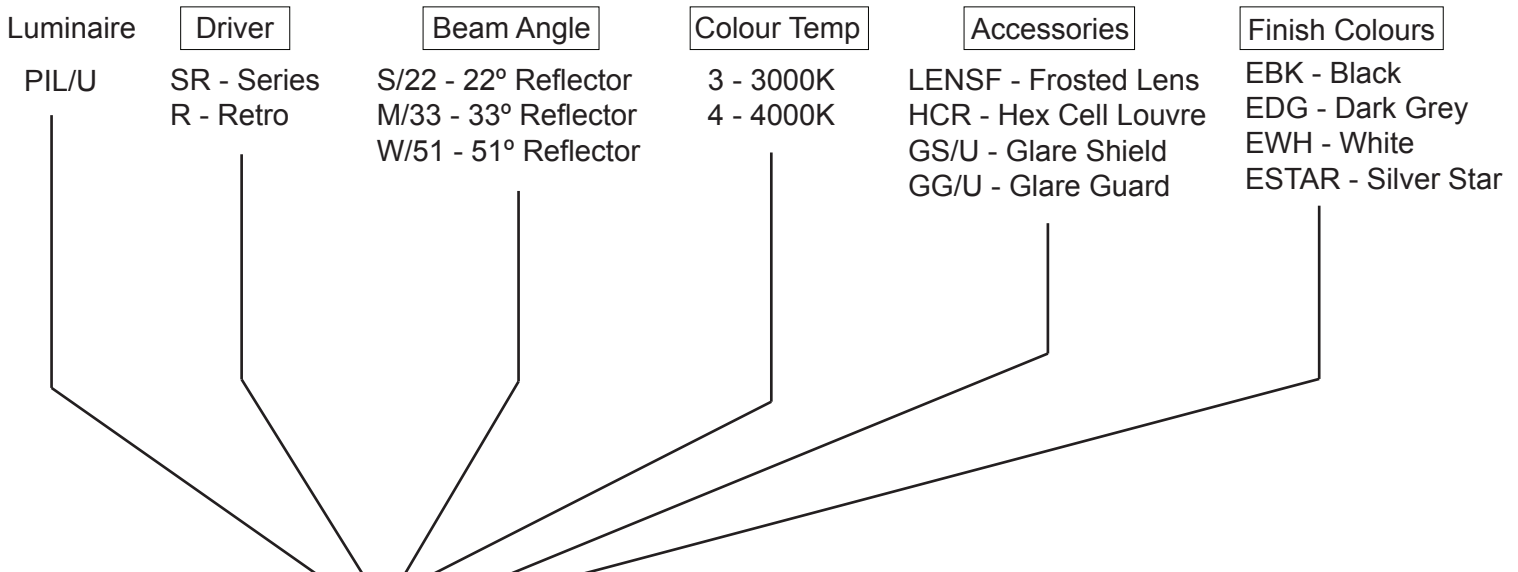
PURE LED
Pure Performance

The Pillar Lite Ultra LED illuminates both upwards and downwards, giving columns, gateway pillars and entrances a dramatic effect

This luminaire is machined from solid aluminium finished with an Epoxy layer and UV stable "E" powder coat. It features an extra clear, tempered, flush, low iron glass lens and high temperature silicon gaskets. The axles and locking cylinders are machined from 316 Stainless Steel.

The Hunza Ultra LED system uses the latest Cree CXA LED chips for maximum performance and long life. Power supply options include a choice of integral 90-305 volt driver or an external remote driver. The Ultra LED system incorporates an innovative Plug-and-Play system for easy replacement or upgrade of the LED engine. Three beam angles and a choice of 3000K or 4000K colour temperatures are available.

Ordering Information



Ordering Example: PIL/U R 15 3 ST50FL BK

HUNZATM
PURE
OUTDOOR
LIGHTING

HUNZA FACTORY
130 Felton Mathew Ave
Saint Johns
Auckland 1072
New Zealand

Ph: 64-9-528 9471
Fax: 64-9-528 9361
hunza@hunza.co.nz
www.hunza.co.nz

INTERNATIONAL CONTACTS:
www.hunza.co.nz/contacts.php

Specifications may change without notice.
Manufactured in New Zealand.
© 2014 Hunza Holdings Ltd.

Luminaire Construction

CNC machined from:

Body - solid 130mm (5 1/8") aluminium rod.

Base - solid 105mm (4 9/64") aluminium rod with chromate substrate finished with an Epoxy layer and high UV resistant polyester "E" powder coat colours Black, Dark Grey, White, Silver Star.

Luminaire Weight

8kg (17lbs 10oz)

Features

Lens

12mm (1/2") extra clear low iron flush fit shatter resistant glass. Lifetime Warranty.

Gasket

Silicone, iron impregnated 220°C (428°F)

Accessories

Frosted Lens (Cat. ST150FL)
Hex Cell Louver (Cat. ST150HCR)
Glare Guard (Cat. GG/U)
Glare Shield (Cat. GS/U)

Mounting

A mounting plate is fixed to the wall using three screws and the luminaire is fitted to the mounting plate.

Technical Information

Standards

BS/EN 60598.2.2
IP66 UL 1598 (pending)

LED (per end)

Cree CXA2540 Plug-and-Play, field replaceable LED board.

Lumen Output: 2800 at 700mA

Lumens Per watt: 48 at 62.5w

CRI Warm White (3000k): 85+

Colour Temp: 3000K or 4000K

Power Supply

Retro 110/240/277 Volt Driver

Hunza™ Retro Driver

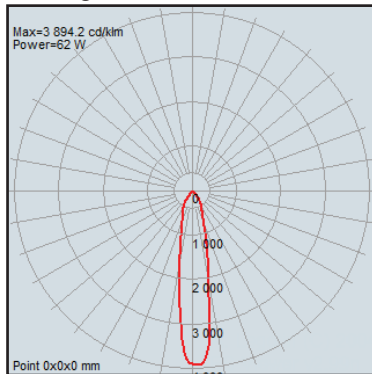
Input: 120, 240 or 277 volts, 70watt total

Output: 74vdc, 700mA

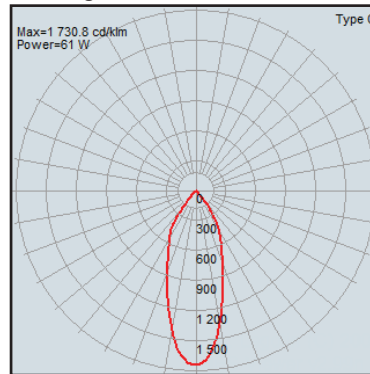
0-10 volt dimming

Beam Angles

22 Deg. Reflector



33 Deg. Reflector



51 Deg. Reflector

