

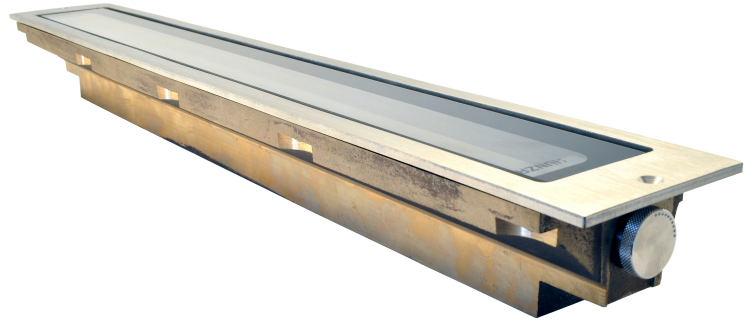
## Cast Solid Bronze Adjustable Linear Lite

PROJECT:
TYPE:
SOURCE:
NOTES:

### SPECIFICATIONS



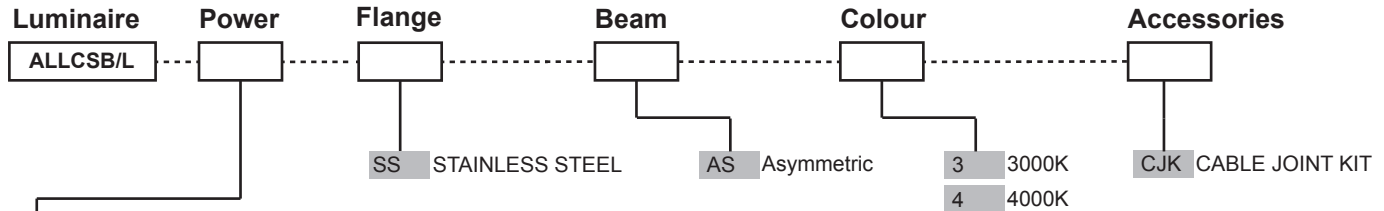
<b>LED Chip</b>	Cree J Series 3030 X 96 replaceable linear board
<b>Luminaire Output</b>	1000 Lumens @ 14.4 watts delivered from luminaire with 3000K unobstructed beam
<b>Lumens Per Watt</b>	70 Lumens minimum @ 14.4 watts delivered from luminaire with 3000K unobstructed beam
<b>CRI (3000K)</b>	90+ Standard
<b>Colour Temperatures</b>	3000K, 4000K
<b>Beam Angles</b>	Asymmetric
<b>Ingress Protection</b>	IP67
<b>Warranty</b>	Electronics = 5 years Body Cast Solid Bronze = 25 years
<b>Standards</b>	CE UL1598,2108,1838 (Pending)



### PRODUCT CONFIGURATION

Please fill in appropriate codes into boxes provided

Cat. No. ALLCSB/L



- D24 24VDC REMOTE
- R RETRO, 120-277vac INPUT

**24VDC REMOTE:**  
Constant voltage driver fixture requires 24vdc @ 700mA maximum.

**RETRO 110-277vac DRIVER:**  
Constant Voltage driver (included).  
Input: 120,240,277 volts.  
Output: 17 watts total

ADDITIONAL COMMENTS:

# LUMINAIRE CONSTRUCTION

**Body:**  
CNC machined sand cast silicon bronze.

**Flange:**  
CNC machined from 316 Stainless Steel 720mm x 100mm x 5mm (28<sup>3/8</sup>" x 4" x 1/4")

All fixings are made from 316 Stainless Steel.

**Step Lens:**  
10mm (25/64") Extra clear, low iron, shatter resistant glass.  
Lifetime warranty.

**Gaskets:**  
Silicone, iron impregnated 220°C (428°F).

**Cable:**  
Water resistant rubber.

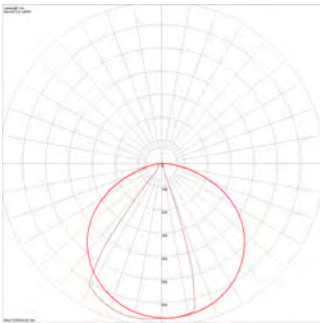
**Adjustability:**  
The inner rotating body is fully adjustable, allowing 0-90° of rotation within the fixture.

**Mounting:**  
The Adjustable Linear Lite comes with a 1.2mm stainless steel mounting canister for casting into the ground or concrete.  
Maximum drive over speed 10 kp/h (6mp/h) with a maximum load rating of 2000kgs (4400lbs).

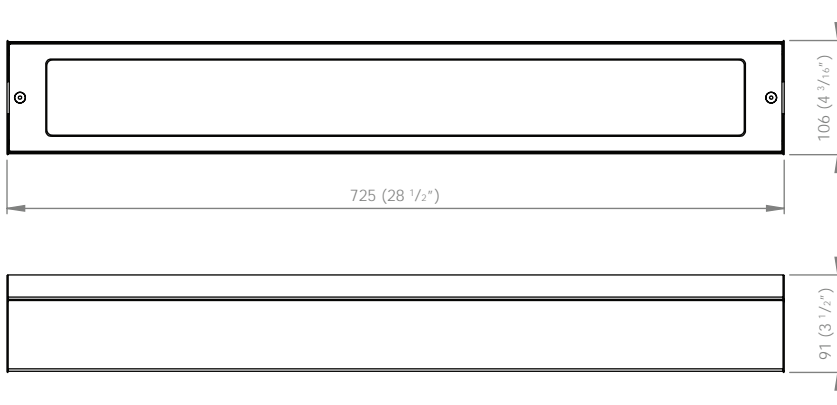
**Luminaire Weight:**  
12.5kg (27lb 9oz)

## BEAM ANGLES

IES files available for download: [www.hunzalighting.com/download.php](http://www.hunzalighting.com/download.php)

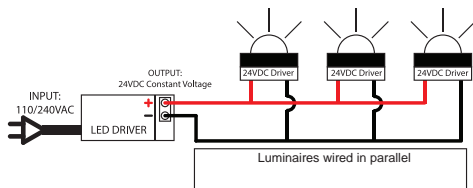


## DIMENSIONS



## WIRING GUIDE

available for download: [www.hunzalighting.com/download.php](http://www.hunzalighting.com/download.php)



Diagrams are a guide only, wire colours and polarity may change depending on fixture and country

