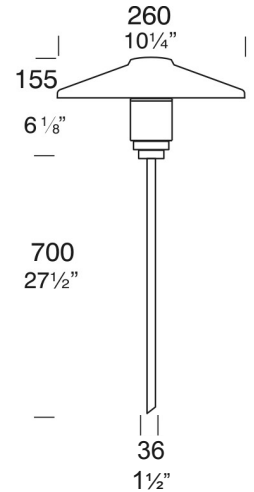


PROJECT:
TYPE:
SOURCE:
NOTES:

### PURELED SPECIFICATIONS

<b>LED Chip</b>	Cree XHP-50-2 Plug and Play field replaceable LED board
<b>Luminaire Output</b>	510 Lumens @ 1050mA (6 watts), 340 Lumens @ 700mA (4 watts), 160 Lumens @ 350mA (2 watts), delivered from luminaire with unobstructed beam.
<b>Lumens Per Watt</b>	85 Lumens minimum @ 6 watts, delivered from luminaire with unobstructed beam
<b>CRI (3000K)</b>	85+ Standard, 90+ Optional
<b>Colour Temperatures</b>	2700K, 3000K, 4000K
<b>Beam Angles</b>	360 degrees
<b>Ingress Protection</b>	IP56/IP66
<b>Warranty</b>	Electronics = 5 years Body Cop/ SS = 10 years Body Aluminium = 5 years
<b>Standards</b>	AS/NZS 61046 cUL 1838, 2108 CSA C22.2 No.250.7, No.250.0-08 CE



### PRODUCT CONFIGURATION

Please fill in appropriate codes into boxes provided

Cat. No. TL/L

Luminaire	Power	Material/ Finish	Beam	Colour	Accessories
<input type="text" value="TL/L"/>	<input type="text"/>	<input type="text"/>	<input type="text"/>	<input type="text"/>	<input type="text"/>

- S** SERIES, REMOTE DRIVER
- D3** 12VAC, 2W INTEGRAL
- D7** 12VAC, 4W INTEGRAL
- D10** 12VAC, 6W INTEGRAL
- R** RETRO, 110/240V DRIVER

- ALUMINIUM**
- EBK** BLACK
- EBZ** BRONZE
- EOGR** OLIVE GREEN
- EWH** WHITE
- EWB** WHITE BIRCH
- EDG** DARK GREY
- ESTAR** SILVER STAR
- ECT** CORTEN
- COP** SOLID COPPER
- SS** STAINLESS STEEL

- 2** 2700K
- 3** 3000K
- 4** 4000K
- 39** 3000K, 90+ CRI
- SSP/G** SUPER SPIKE
- FM** FLANGE MOUNT
- CJK** CABLE JOINT KIT
- BOLOP** OPAQUE LENS

**SERIES, REMOTE DRIVER REQUIRED:**  
Constant current driver  
Individual fixtures require 6vdc @ 1050mA maximum

**12VAC INTEGRAL DRIVER:**  
Hunza integrated plug and play driver (included)  
Input: 9-15VAC, 7watt total  
Output: 6vdc @ D3=350mA, D7=700mA, D10=1050mA (1050mA limited to ≤ 40°C (104°F) ambient temperature in stainless steel)

**110/240VAC RETRO DRIVER:**  
Input: 120/240vac, 5 watt total (included)  
Output: 6vdc, 700mA  
0-10 volt dimming (USA - non dimming)

**OTHER LAMP OPTIONS:**  
 TL/H - MR16 Halogen 12V Lamp  
 TL/SL - MR16 LED Retrofit 12V Lamp (lamps vary by market - please refer to supplier for details)  
 TL/GUH - GU10 120/240V Halogen Lamp (body length increases for all GU10 lamps)  
 TL/GUSL - GU10 LED Retrofit 120/240V Lamp (lamps vary by market - please refer to supplier for details)

[Click for here Remote Power Supply Guidance Charts](#)

[Click here for halogen specification sheet](#)

# LUMINAIRE CONSTRUCTION

## CNC machined from one of the following metals:

### Aluminium:

Body: Solid high corrosion resistant 63.5mm (2½") x 10mm (3/8") aluminium.  
 End cap: solid aluminium 63.5mm (2½") rod, with chromate substrate and high UV resistant polyester powder coat.  
 Pole: aluminium 38.1mm (1½") tube.  
 Colours:  
 Black, Bronze, Silver Star, White, White Birch, Olive Green, Dark Grey, Corten.

### Copper:

Body: 63.5mm (2½") x 10mm (3/8").  
 End cap: solid copper 63.5mm (2½") rod.  
 Pole: solid copper 38.1mm (1½") tube.

### 316 Stainless Steel:

Body: 63.5mm (2½") x 10mm (3/8").  
 End cap: solid 316 stainless steel 63.5 (2½") rod.  
 Pole: 316 stainless steel 38.1mm (1½") tube.

### Anti-glare Hood:

260mm (10¼") x 1.2mm (1/16") handspun aluminium, copper or stainless steel. No upward light or glare projected.

### Gaskets:

Silicone, iron impregnated 220°C (428°F).

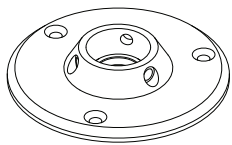
### Mounting:

The pole 700mm (27½") is directly mounted into the earth. For extra stability in sand or loose ground use Hunza Super Spike. Flange Mount option is available for hard surfaces.

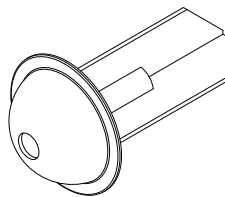
### Luminaire Weight:

Low voltage  
 Alum: 0.915kg (2lb)  
 Cop: 1.590kg (5lb 11oz)  
 SS: 1.450kg (3lb 13z)  
 Retro™  
 Alum: 2.000kg (4lb 6oz)  
 Cop: 3.000kg (6lb 9oz)  
 SS: 2.900kg (6lb 6oz)

## ACCESSORIES



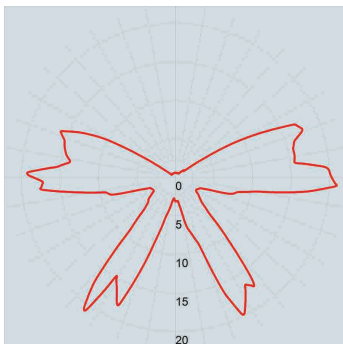
Flange Mount



Super Spike

## BEAM ANGLES

IES files available for download: [hunzalighting.com/downloads](http://hunzalighting.com/downloads)

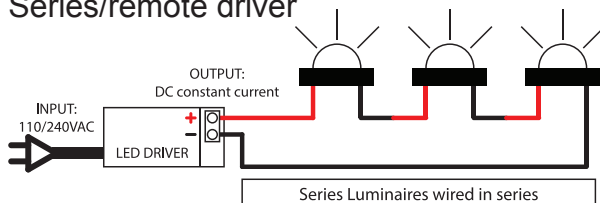


Polycarbonate lens

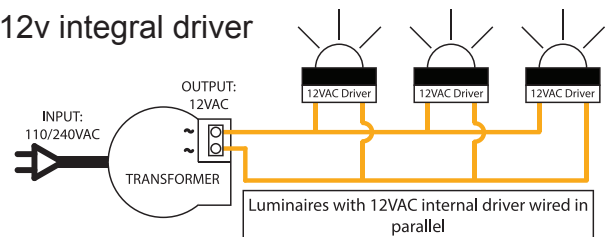
## WIRING GUIDE

Available for download: [hunzalighting.com/downloads](http://hunzalighting.com/downloads)

### Series/remote driver



### 12v integral driver



Diagrams are a guide only, wire colours and polarity may change depending on fixture and country

Specifications may change without notification

Aug 2017