

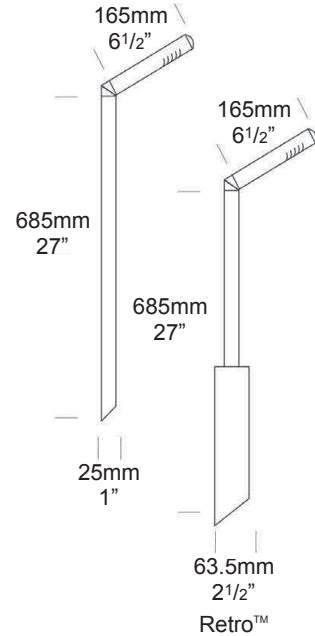
Walkway Lite

PROJECT:
TYPE:
SOURCE:
NOTES:

PURELED SPECIFICATIONS

LED Chip	Cree XPG-3 Plug and Play field replaceable LED board
Luminaire Output	120 Lumens @ 700mA (2 watts), delivered from luminaire with unobstructed beam.
Lumens Per Watt	60 Lumens minimum @ 2 watts, delivered from luminaire with unobstructed beam
CRI (3000K)	85+ Standard, 90+ Optional
Colour Temperatures	2700K, 3000K, 4000K
Beam Angles	Asymmetric
Ingress Protection	IP44

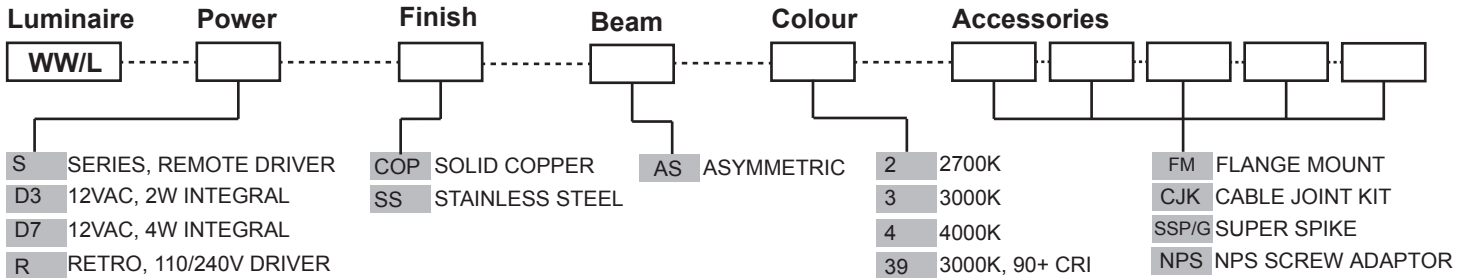
Warranty	Electronics = 5 years Body Cop/SS = 10 years
Standards	AS/NZS 61046 cUL 1838, 2108 CSA C22.2 No.250.7, No.250.0-08 CE



PRODUCT CONFIGURATION

Please fill in appropriate codes into boxes provided

Cat. No. WW/L



SERIES, REMOTE DRIVER REQUIRED:
Constant current driver
Individual fixtures require 3vdc @ 700mA maximum
12VAC INTEGRAL DRIVER:
Hunza Buckbullet driver (included)
Input: 12VAC, 2watt at 700mA
Output: 3vdc @ D3=350mA, D7=700mA
110/240VAC RETRO DRIVER:
Input: 120/240vac, 2 watt total (included)
Output: 3vdc, 700mA
0-10 volt dimming
(USA - non dimming)

OTHER LAMP OPTIONS:
WW/H - G4 Halogen 12V Lamp
WW/GL - G4 LED Retrofit 12V Lamp (lamps vary by market - please refer to supplier for details)

[Click here for halogen specification sheet](#)

[Click here for Remote Power Supply Guidance Charts](#)

LUMINAIRE CONSTRUCTION

CNC machined from one of the following metals:

Copper

Pole: solid copper 25.4mm (1") rod.
End cap: solid copper 25.4mm (1") rod.

316 Stainless Steel

Pole: 316 stainless steel 25.4mm (1") rod.
End cap: 316 stainless steel 25.4mm (1") rod.

Elbow: investment cast in brass or stainless steel

Lens:

22mm (3/4") extra clear low iron flush fit shatter resistant glass tube.
Lifetime warranty.

Gaskets:

Silicone, iron impregnated 220°C (428°F).

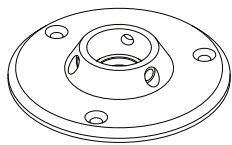
Mounting

The pole 685mm (27") is directly mounted into the earth or concrete. For extra stability in sand or loose ground use the Super Spike. Flange Mount option is available for hard surfaces.

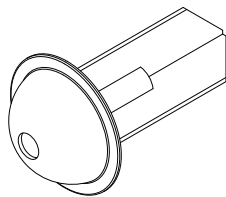
Luminaire Weight:

Low voltage
Cop: 1.100kg (2lb 6oz)
SS: 1.100kg (2lb 6oz)
Retro™
Cop: 2.380kg (5lb 3oz)
SS: 2.380kg (5lb 3oz)

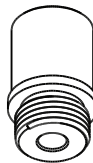
ACCESSORIES



Flange Mount



Super Spike



NPS 1/2"
Screw Mount Adaptor

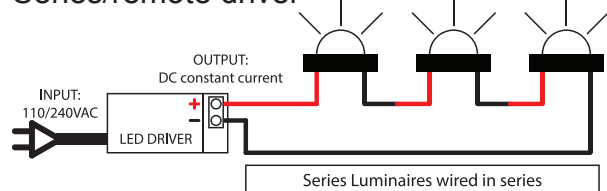
BEAM ANGLES

High efficiency PMMA TIR lenses. Field replaceable

IES files available for download: hunzalighting.com/downloads

WIRING GUIDE

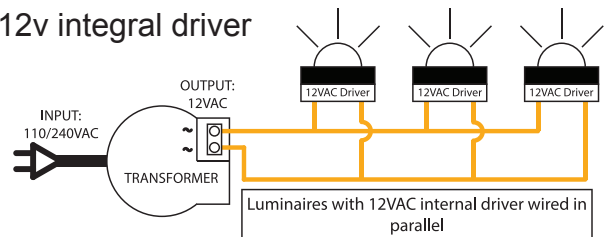
Series/remote driver



Diagrams are a guide only, wire colours and polarity may change depending on fixture and country

Available for download: hunzalighting.com/downloads

12v integral driver



Specifications may change without notification

Aug 2017

HUNZA™ PURE
OUTDOOR
LIGHTING

HUNZA FACTORY

130 Felton Mathew Ave
Saint Johns
Auckland 1072
New Zealand

Ph: +64-9-528 9471
Fax: +64-9-528 9361
hunza@hunza.co.nz
www.hunzalighting.com

INTERNATIONAL CONTACTS:

<http://www.hunzalighting.com/contact.php>

This document contains proprietary information of Hunza. Its receipt or possession does not convey any rights to reproduce or disclose its content.