

Light efficiency:

119 Lumen/Watt

Light quality:

CRI: 82.7

Color temperature:

2996 K

Output: 1498 lm

Peak: 8140 cd

Power: 12.6 W

18.0V @ 0.700A

2 PLANES



Product name:

Ultra 12 18Deg 3K

Date and time:

6/07/2020 10:48:10 AM

Item number:

S/U12-18-3

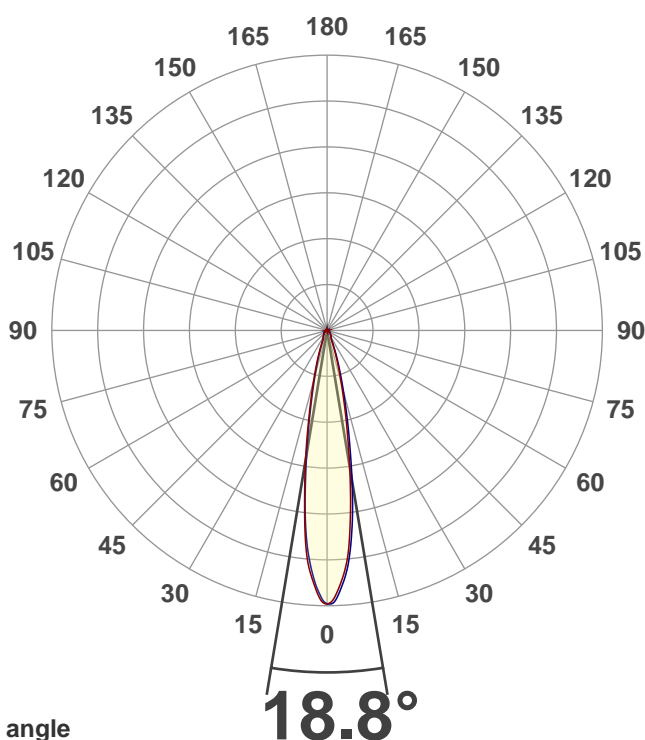
Operator:

N.Afshar

Additional information:

Hunza Ultra 12 Spot

18 Degrees 3000K 700mA 18Vf



Color

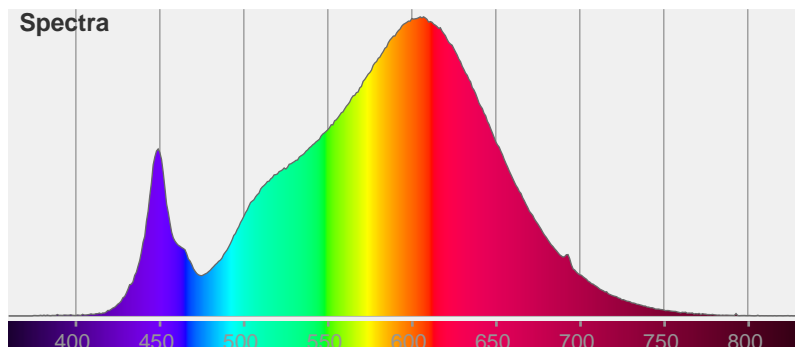


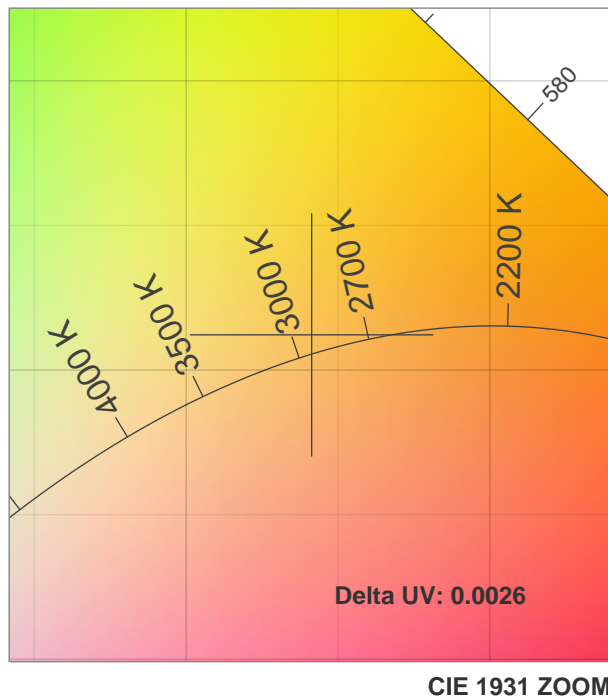
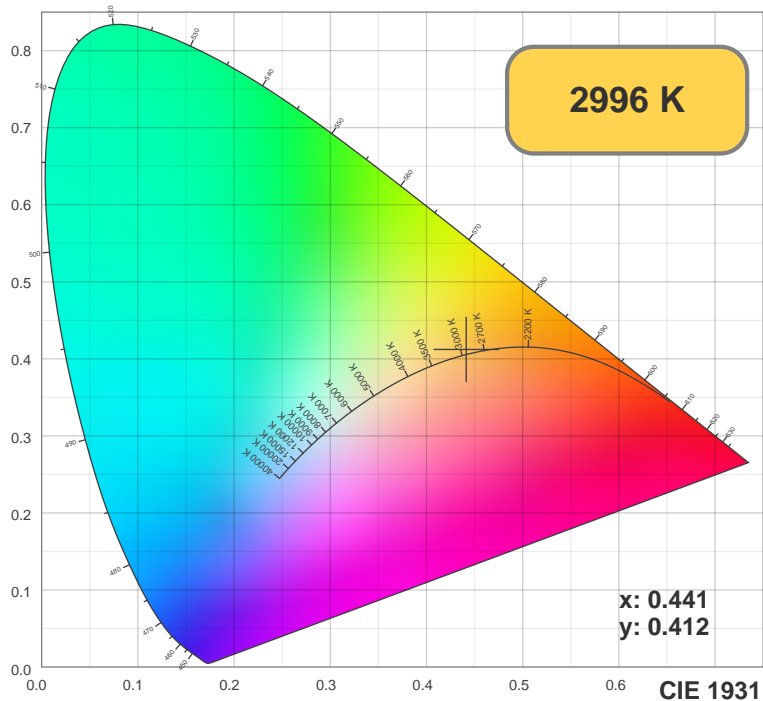
CIE1931

x: 0.441

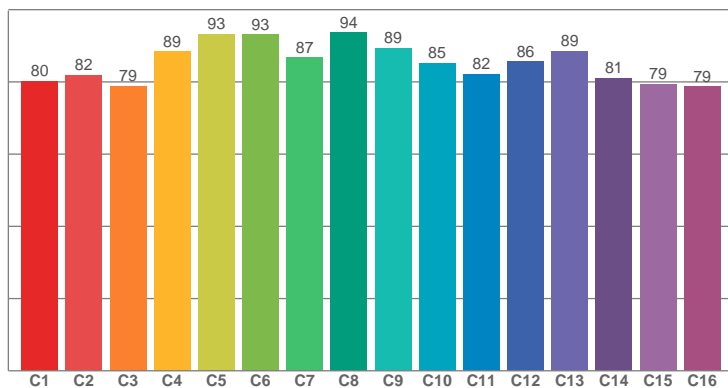
y: 0.412

Spectra

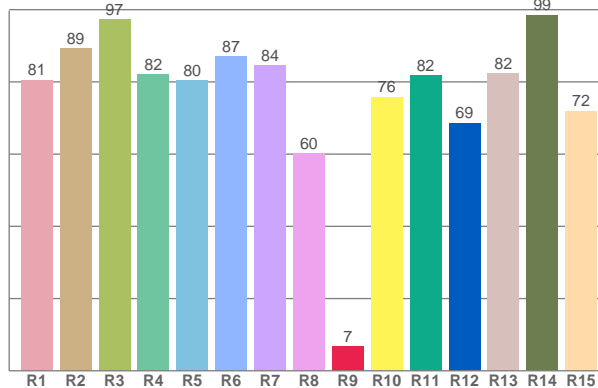




TM30: 85.4



CRI: 82.7 (R1-R8)



CRI R values, only R1-R8 are used to calculate final CRI value

R1	R2	R3	R4	R5	R6	R7	R8	R9	R10	R11	R12	R13	R14	R15
80.56	89.26	97.36	82.13	80.46	87.08	84.49	60.14	6.84	75.83	81.86	68.61	82.39	98.57	72.00

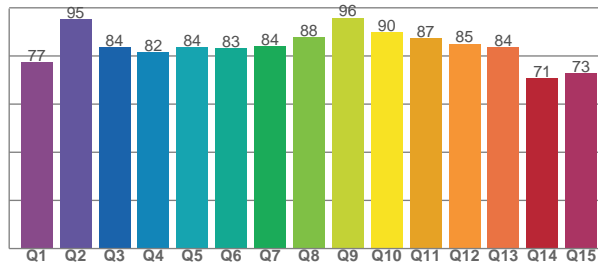
TM30 C values, 16 binned values out of total of 99 C values

C1	C2	C3	C4	C5	C6	C7	C8	C9	C10	C11	C12	C13	C14	C15	C16
80.28	81.94	78.87	88.52	93.28	93.10	86.79	93.78	89.39	85.24	82.20	85.59	88.61	81.08	79.43	78.76

CQS Q values

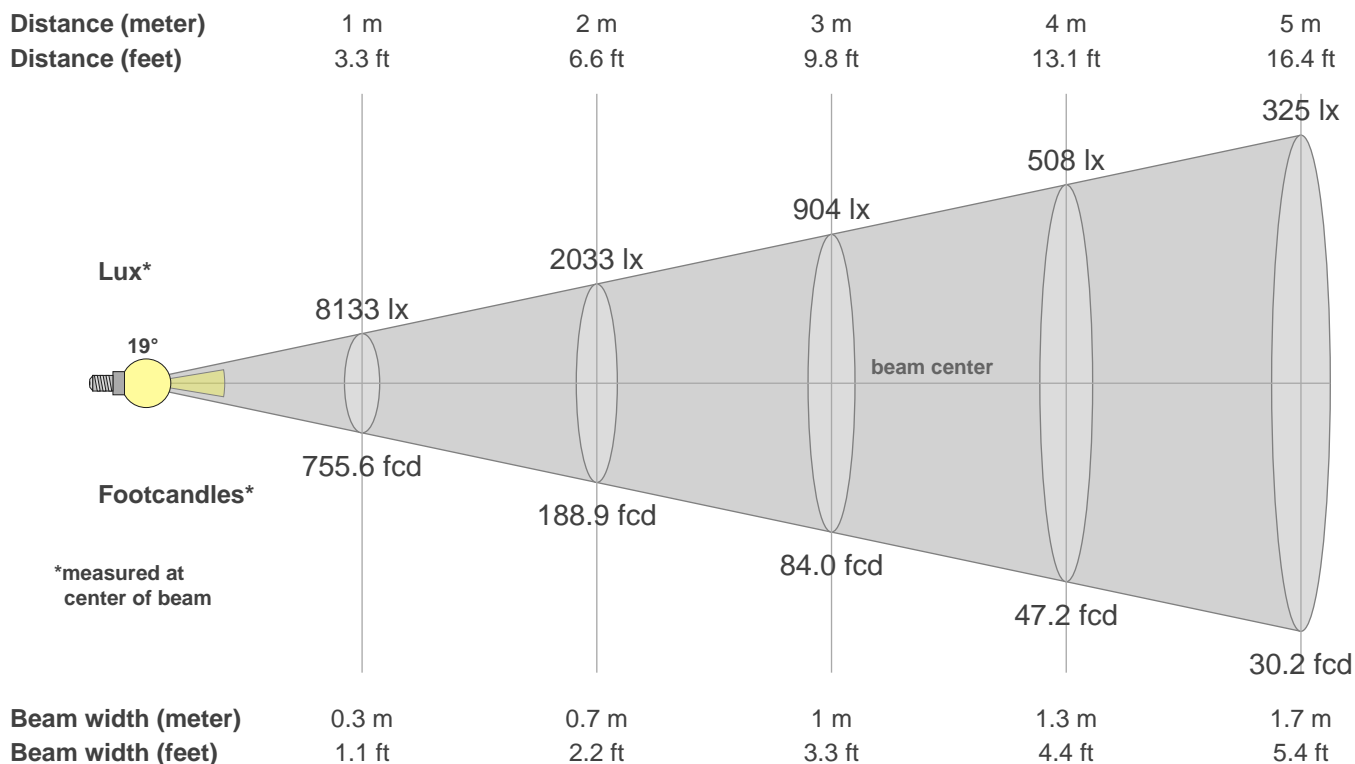
Q1	Q2	Q3	Q4	Q5	Q6	Q7	Q8	Q9	Q10	Q11	Q12	Q13	Q14	Q15
77.33	95.31	83.54	81.60	83.56	83.28	84.02	87.73	95.92	89.93	87.45	85.10	83.55	70.63	73.01

CQS: 82.6



Color parameters

CCT	CRI	CRI R9	TM30 Rf	TM30 Rg	CQS	x	y	u	v	Duv
2996 K	82.7	6.8	85.4	96.2	82.6	0.4	0.4	0.2	0.4	0.0026



Intensities in 0° c-plane

0°	1°	2°	3°	4°	5°	6°	7°	8°	9°	10°	11°	12°	13°	14°	15°	16°	17°	18°	19°
8133	8058	7841	7553	7237	6848	6307	5665	5014	4367	3756	3204	2736	2315	1949	1639	1390	1183	996	839
100%	99%	96%	93%	89%	84%	78%	70%	62%	54%	46%	39%	34%	28%	24%	20%	17%	15%	12%	10%

Intensities in 90° c-plane

0°	1°	2°	3°	4°	5°	6°	7°	8°	9°	10°	11°	12°	13°	14°	15°	16°	17°	18°	19°
8133	8129	7984	7711	7412	7050	6578	6029	5445	4803	4174	3580	3081	2628	2223	1884	1603	1358	1149	971
100%	100%	98%	95%	91%	87%	81%	74%	67%	59%	51%	44%	38%	32%	27%	23%	20%	17%	14%	12%

Intensities in 180° c-plane

0°	1°	2°	3°	4°	5°	6°	7°	8°	9°	10°	11°	12°	13°	14°	15°	16°	17°	18°	19°
8133	8080	7858	7543	7211	6795	6199	5485	4794	4169	3582	3030	2559	2167	1833	1548	1312	1109	941	793
100%	99%	97%	93%	89%	84%	76%	67%	59%	51%	44%	37%	31%	27%	23%	19%	16%	14%	12%	10%

Intensities in 270° c-plane

0°	1°	2°	3°	4°	5°	6°	7°	8°	9°	10°	11°	12°	13°	14°	15°	16°	17°	18°	19°
8133	8006	7740	7413	7022	6569	6016	5360	4640	3960	3340	2818	2360	1969	1644	1377	1153	967	809	666
100%	98%	95%	91%	86%	81%	74%	66%	57%	49%	41%	35%	29%	24%	20%	17%	14%	12%	10%	8%

Beam angle 50%	Field angle 10%	Cutoff angle 2.5%	Intensity ratio in 120° cone	Intensity ratio in 90° cone
18.8°	38.0°	66.1°	97.5%	89.4%