

Light efficiency:

98 Lumen/Watt

Light quality:

CRI: 68.9

Color temperature:

5652 K

Output: 481 lm

Peak: 286 cd

Power: 4.9 W

19.6V @ 0.250A

2 PLANES



Product name:

**DLCM-HP-WHITE-70D**

Date and time:

**12/10/2020 3:31:40 PM**

Item number:

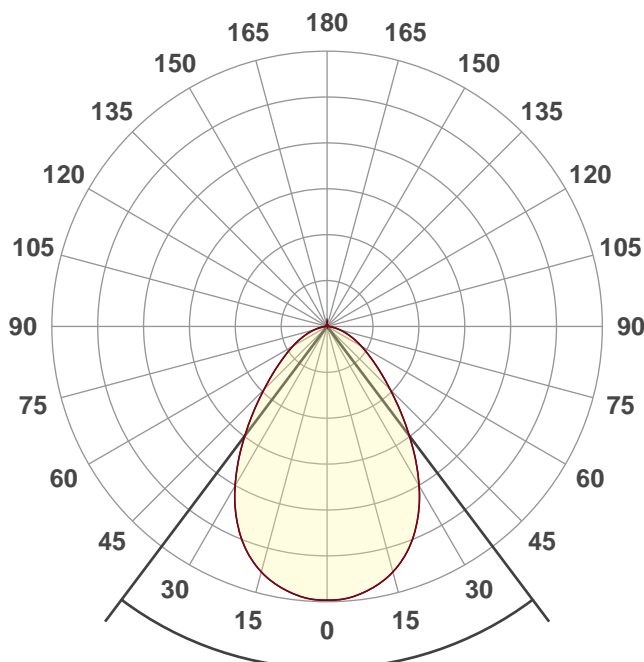
**DLCM-HP-WHITE-70D**

Operator:

**HUNZA**

Additional information:

**DOWN LIGHT CEILING  
MOUNT HIGH POWER -  
250MA 19.6VOLT - IP66 -  
WHITE - 70DEGREE - SOLID  
POWDERCOATED  
ALUMINIUM**



Beam angle

**73.9°**

Color

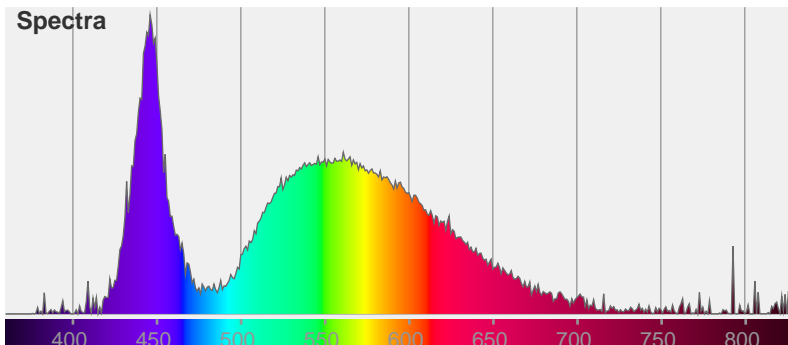


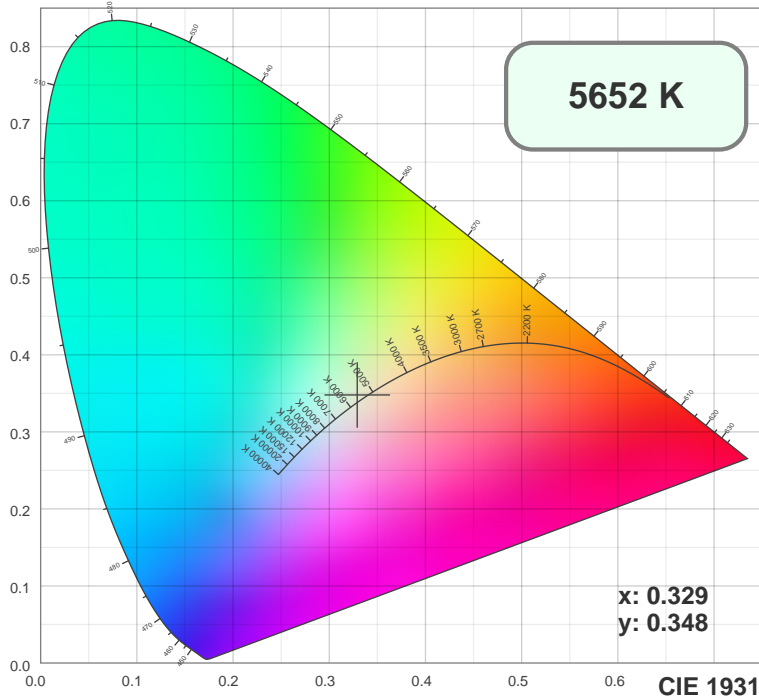
CIE1931

x: 0.329

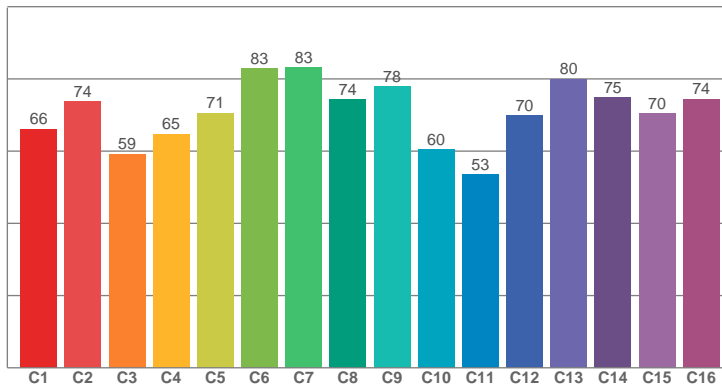
y: 0.348

Spectra





TM30: 70.3



CRI R values, only R1-R8 are used to calculate final CRI value

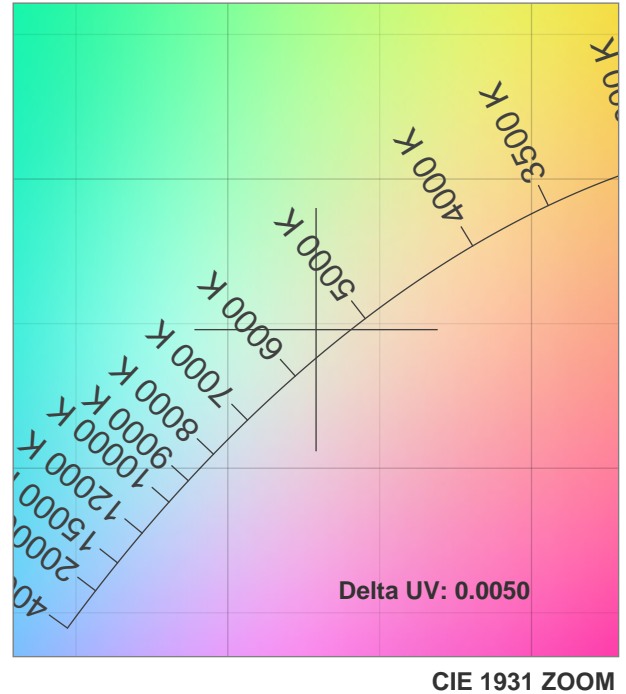
R1	R2	R3	R4	R5	R6	R7	R8	R9	R10	R11	R12	R13	R14	R15
66.84	72.16	75.38	70.81	67.91	62.71	77.82	57.66	-35.01	33.70	68.44	38.60	66.76	86.06	60.26

TM30 C values, 16 binned values out of total of 99 C values

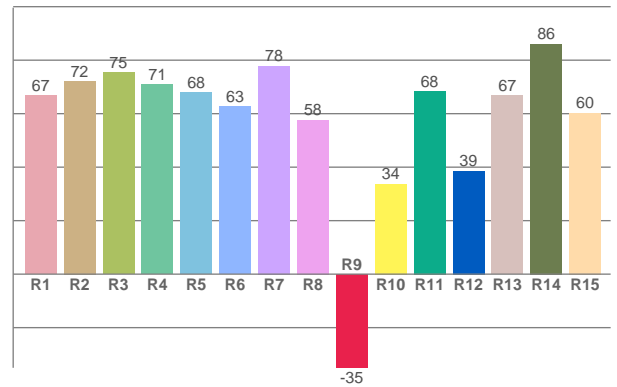
C1	C2	C3	C4	C5	C6	C7	C8	C9	C10	C11	C12	C13	C14	C15	C16
66.15	73.80	59.26	64.78	70.61	82.97	83.23	74.30	77.85	60.48	53.48	69.81	79.97	74.83	70.41	74.48

CQS Q values

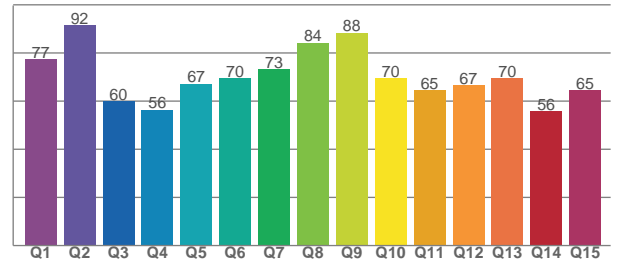
Q1	Q2	Q3	Q4	Q5	Q6	Q7	Q8	Q9	Q10	Q11	Q12	Q13	Q14	Q15
77.44	91.58	60.07	56.47	67.25	69.64	73.40	84.31	88.44	69.54	64.64	66.65	69.51	55.87	64.66



CRI: 68.9 (R1-R8)

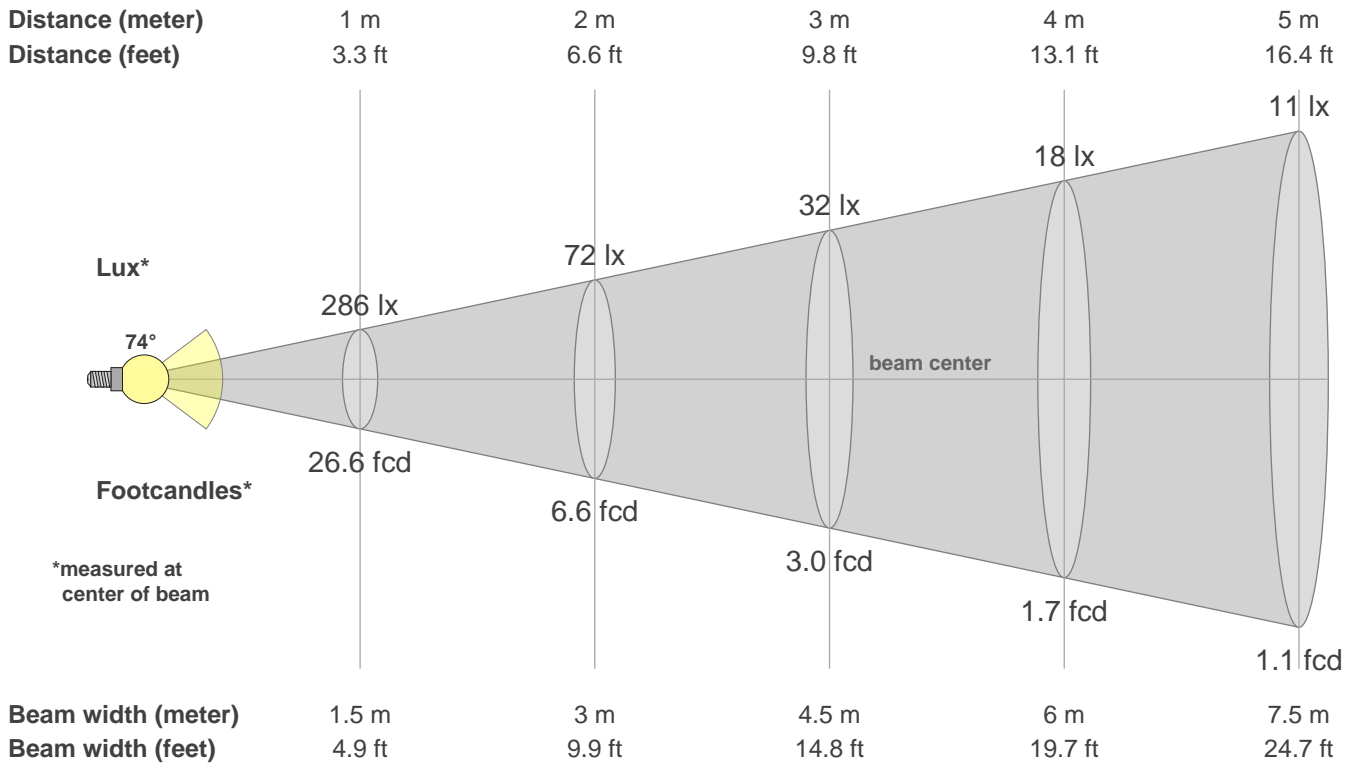


CQS: 68.8



## Color parameters

CCT	CRI	CRI R9	TM30 Rf	TM30 Rg	CQS	x	y	u	v	Duv
5652 K	68.9	-35.0	70.3	94.7	68.8	0.3	0.3	0.2	0.3	0.0017



## Intensities in 0° c-plane

0°	5°	10°	15°	20°	25°	30°	35°	40°	45°	50°	55°	60°	65°	70°	75°	80°	85°	90°	95°
286	285	277	266	248	223	192	157	123	94	71	54	41	31	22	14	8	3	1	1
100%	99%	97%	93%	87%	78%	67%	55%	43%	33%	25%	19%	14%	11%	8%	5%	3%	1%	0%	0%

## Intensities in 90° c-plane

0°	5°	10°	15°	20°	25°	30°	35°	40°	45°	50°	55°	60°	65°	70°	75°	80°	85°	90°	95°
286	285	277	266	248	223	192	157	123	94	71	54	41	31	22	14	8	3	1	1
100%	99%	97%	93%	87%	78%	67%	55%	43%	33%	25%	19%	14%	11%	8%	5%	3%	1%	0%	0%

## Intensities in 180° c-plane

0°	5°	10°	15°	20°	25°	30°	35°	40°	45°	50°	55°	60°	65°	70°	75°	80°	85°	90°	95°
286	285	277	266	248	223	192	157	123	94	71	54	41	31	22	14	8	3	1	1
100%	99%	97%	93%	87%	78%	67%	55%	43%	33%	25%	19%	14%	11%	8%	5%	3%	1%	0%	0%

## Intensities in 270° c-plane

0°	5°	10°	15°	20°	25°	30°	35°	40°	45°	50°	55°	60°	65°	70°	75°	80°	85°	90°	95°
286	285	277	266	248	223	192	157	123	94	71	54	41	31	22	14	8	3	1	1
100%	99%	97%	93%	87%	78%	67%	55%	43%	33%	25%	19%	14%	11%	8%	5%	3%	1%	0%	0%

Beam angle 50%	Field angle 10%	Cutoff angle 2.5%	Intensity ratio in 120° cone	Intensity ratio in 90° cone
73.9°	132.1°	161.5°	88.1%	71.0%